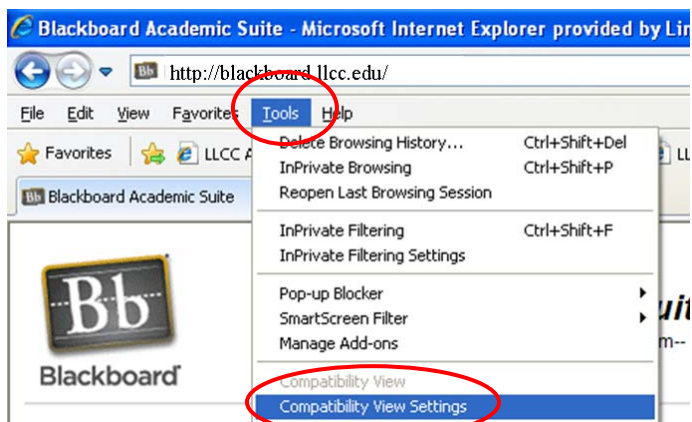


Known Compatibility Issues with Internet Explorer 8 and Blackboard

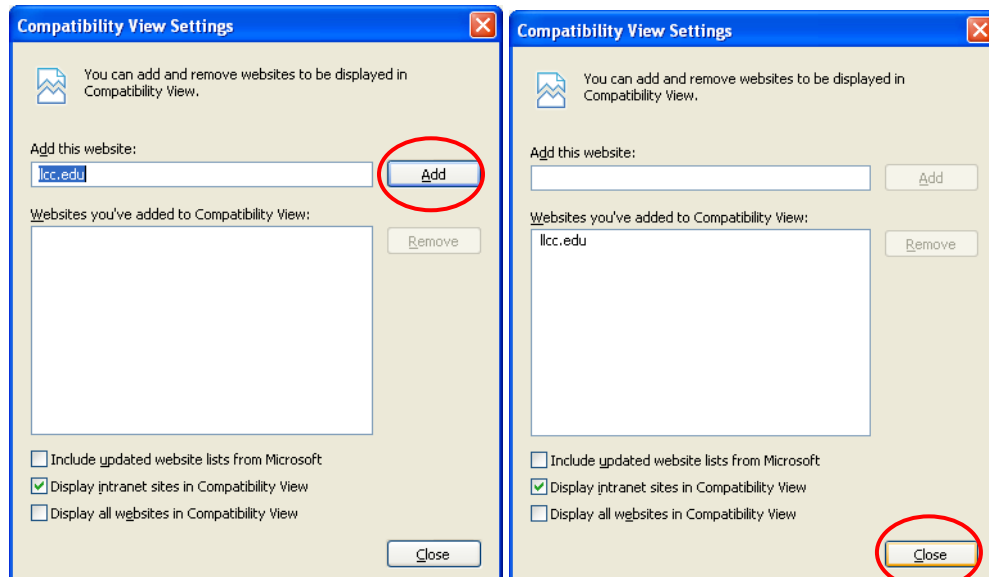
At this time, please avoid installing the new *Microsoft Internet Explorer 8* (IE 8) Web browser or using it with Blackboard. Specifically, Internet Explorer 8 has problems displaying Blackboard's online tests.

If you have already installed IE 8, please try the following:

1. Use another browser such as Mozilla Firefox. This free browser can be downloaded from <http://www.mozilla.com/en-US/firefox/ie.html>
2. If you have to use Internet Explorer 8, try using its **compatibility mode**.
 - a. Open Internet Explorer 8
 - b. Go to <http://blackboard.llcc.edu> Click the **Tools** menu and click **Compatibility View**



- c. On the next screen, click **Add** and then click **Close**.



Once you have done this you should be able to navigate into Blackboard and you course successfully. If you have any questions or concerns please contact Andy Mitkos by email at andy.mitkos@llcc.edu or by phone at 786-2763.